



## Holiday Parks Conference & Trade Exhibition 2024

Trade Exhibition Tuesday 13 and Wednesday 14 August 2024. Takina, Wellington

### Trade Exhibition Information and Sponsorship Opportunities

#### Dates

#### Trade Exhibition

Opens 10.00am Tuesday 13 August  
Closes 2.00pm Wednesday 14 August

#### Conference

Opens 8.45am Tuesday 13 August  
Closes 4.40pm Wednesday 14 August

#### Venue - Trade Exhibition

Rongo-ma-tane, Level 1 Takina

#### Set Up

The display company will have the build completed by 1pm on Monday 12 August. You can set up your booth from that time and from 6.45am on Tuesday 13 August. Delivery details for exhibition items will be provided when you book your stand.

#### Pack Out

From 2pm on Wednesday 14 August.

#### Trade Exhibition

Will commence at 10am Tuesday 13 August and ends at 2pm Wednesday 14 August.

There will be a lucky draw for park members at lunch prior to the closing when the winner of the best trade stand will be announced.

#### Stands

Stand sizes 3m x 1.8. Custom stands are available. The following are HPNZ Member Rates.

Size	HPNZ Member Rate - Excl GST
3m x 1.8m	\$1,275 includes one delegate

Stands can be combined by arrangement.

Walls are covered with black frontrunner material. A table and two chairs are included along with power and one spotlight. A company name sign is included. Additional chairs are available at no charge. No tablecloth is included as the tables are of high quality. You can bring your own preferred.

The stand price includes the stand and meals as detailed for one person.

#### Meals Included

Tuesday 13

Morning Tea, Lunch, Afternoon Tea and Dinner drinks within the Trades Exhibition Area.

Wednesday 14

Tea and Coffee & savoury on arrival, Morning Tea and Lunch.

#### Awards Dinner

Awards Dinner will be held at Te Papa on Wednesday evening. Trade members are encouraged to attend. This is an additional cost.

#### Conference App

All exhibitors will be featured in the conference app.

#### No conference satchel

There will be no conference satchel this year.

#### New for 2024

- Trade Focus – your opportunity to present to all delegates prior to a break in the plenary.
- Conference table drop.
- Following feedback from trade we will close the trade exhibition at 2pm on Wednesday.

As in 2023, we have removed the AGM from the conference to allow park delegates more time with the trade.

Morning tea, lunch and afternoon tea will be served in the trade exhibition.

Dinner and drinks on Tuesday night will be served in the Trade Exhibition

On Wednesday morning we will serve tea and coffee and a savoury item at 7.45am prior to the first plenary session at 8.30am.

#### **Additional Staff**

Additional exhibition staff will be charged at \$330.

#### **Floor Plan**

Floor plan of the display area follows and may be subject to change. Please select your preferred booth and provide us with alternatives.

#### **Major Sponsor**

The major sponsor is yet to be confirmed. Other sponsorship options are available and should be discussed with HPNZ.

#### **Sponsorship Packages**

Special packages are available which include booths, signage, satchel inserts and other options.

#### **Trade Focus (Morning and Afternoon Teas) \$2,500 + gst**

You will have a five-minute slot prior to a morning or afternoon tea break to present your product. You will be featured as a conference sponsor and highlighted to delegates during the plenary sessions. This is available to exhibitors only.

#### **Conference table drop - \$1,000 +gst**

You would need a minimum of 180 and you would be responsible for placing the item on the tables.

#### **Lanyard Sponsorship – \$2,500 + gst**

Sold for 2024

#### **Coffee Cart Sponsorship - \$3,500 + gst**

You can have your stand next to the coffee cart.

#### **Conference Speaker \$5,000 + gst**

Acknowledgement in the conference programme. Opportunity to introduce the speaker. You will be featured as a conference sponsor.

#### **Entertainment Sponsorship \$3,500 + gst**

Includes acknowledgement in the conference programme, two complimentary tickets to the Interislander Awards dinner on Wednesday and you will be featured as a conference sponsor.

#### **Awards Pre dinner Cocktails \$3,500**

Sold for 2024

#### **Delegate Gifts**

These are to be given from exhibitors stand.

#### **Prizes**

We will be running a lucky draw for prizes donated by suppliers. This is a great way to show off your product. The opportunity exists for those companies that cannot attend the conference to supply prizes.

We will send details of major prizes, and the company donating them, to members on a regular basis leading up to the conference.

#### **Accommodation**

Special rates have been arranged at several hotels. Reservations must be made direct to the hotels. Refer to attached registration sheet for details.

#### **Trade Membership of HPNZ**

This is available at a cost of \$420 + gst per annum inclusive of GST. Membership benefits include substantial discounts on conference participation, the opportunity to send out email product news flyers to members and listing in our website and members purchasing book.

#### **Interislander Travel Discount**

Special rates available, awaiting code to be provided.

#### **Parking**

Parking is available during set up and pack out. Other paid parking is available at Te Papa and other parking buildings. Additional information is available in the Takina information provided after booking your stand.

**TRADE EXHIBITION APPLICATION FORM – all rates exclude gst and are for Trade Members**

Stand 3m x 1.8m (includes 1 person)      \$1,275		Awards Dinner Entertainment Sponsorship @ \$3,500	
Additional staff @ \$330		Trade Focus – Limit of 4 Pre Morning & Afternoon Tea & lunch @ \$2,500	
Awards Dinner Wednesday 14 August \$165		Conference Speaker Sponsorship @\$5,000	
Trade Membership of HAPNZ @ \$420 per annum		Conference Table Drop \$1,000 – limit of 3	

**Name of Company (to be shown on stand signage)**

.....

**Your Product/s** .....

.....

**Phone:** .....

**Email to appear in conference programme** .....

**Contact Person & Email if different**.....

**Preferred Stand No (with second, third choice options)** .....

**Name of Person/s Attending** .....

**Special Dietary Requirements** .....

**Payment Details**

An invoice will be issued on receipt of your booking. Payment must be received upon confirmation of booth allocation. Payments are to be made to BNZ 02 0733 0175852 00

- All prices exclude GST except where stated.
- Cancellation Fees of \$200 will apply.
- Stands cancelled within 30 days of the event will not be refunded unless they are resold less the cancellation fee.
- Payment must be received 30 days prior to the exhibition.

For further information contact: Holiday Accommodation Parks Assn of NZ Phone 04 298 3283 email [info@holidayparks.co.nz](mailto:info@holidayparks.co.nz) Postal PO Box 394, Paraparaumu 5254

# Accommodation Options

**QT Wellington:** <https://www.qthotels.com/wellington/>

Stay dates: 11 August – 16 August 2024

Booking period: now until 11 July 2024

Rates from \$273 per night

**Museum Apartment Hotel:** <https://www.independentcollection.com.au/accommodation/new-zealand/museum-apartment-hotel-wellington/>

Stay dates: 11 August – 16 August 2024

Booking period: now until 11 July 2024

Rates from \$245 per night

**To book: In the Corporate ID field input HPC2024 and the special rates will appear**

**ibis Hotel and Novotel Wellington**

15% off the rate at time of booking

Click this link to make your booking

[Holiday Parks Conference - Accor Meetings & Events \(accorevents.com\)](https://www.accor.com/en/accor-meetings-events/accor-meetings-events)

**West Plaza Hotel**

Standard queen rooms (1 queen bed) and twin rooms (1 queen and 1 single bed)

Room rate: \$170 including GST or \$200 including breakfast for 1 and GST

or \$230 including breakfast for 2 and GST

**Confirmation: Holiday Parks NZ Conference Ref #HP24**

Phone – 0800 731 444 or Email – [reservations@westplaza.co.nz](mailto:reservations@westplaza.co.nz) and quote the above confirmation Ref.

**Copthorne Hotel Wellington Oriental Bay**

Superior rooms. One Double and one Single bed, suiting up to 3 occupants. \$339.00 per night, per room.

Superior Harbourview rooms. Choose from one King bed or two Double beds. \$374.00 per night, per room.

Deluxe Harbourview: 1x King bed, King and a Double bed or 1x King and two Singles. \$454.00 per night, per room. **Group code HOLPARK24**

**Oaks Wellington Hotel**

Discount of 12% off best available rate valid between 11-16 August 2024

Promo Code HPNZN2024

**Note that internal rooms do not have any windows**

<https://be.synxis.com/?Chain=18336&themecode=OAKS&configcode=OAKS&brand=Oaks&currency=nzd&hotel=8361&Arrive=2024-08-11&nights=5&Promo=HPNZN2024>

### **U Hotels & Apartments**

A special delegate rate that is 10% lower than direct rates with the promo code: HOPA24. The rates will apply towards our hotels as well as our vacation rentals (apartments). The 2 closest properties to Takina are U Residence Hotel next door to Takina and U Suites on Courtenay which is across the road from Takina on Tory Street. The rates are dynamic and will change depending on occupancy and so best for delegates to get in early.

#### **Promo Code HOPA24 – Holiday Parks NZ Conf**

Stay dates: 12,13,14 Aug 2024

Bookable dates: 17 Jan – 14<sup>th</sup> Aug 2024

Discount amount: 10%

Properties:

U Residence Hotel: <https://uhotelgroup.com/u-residence-hotel-wellington/>

U Boutique Hotel: <https://uhotelgroup.com/u-boutique-hotel-wellington/>

U Suites on Courtenay: <https://uhotelgroup.com/u-suites-on-courtenay-2022/>

U Suites on Webb: <https://uhotelgroup.com/u-suites-on-webb/>

U Suites on Cuba: <https://uhotelgroup.com/u-suites-on-cuba/>

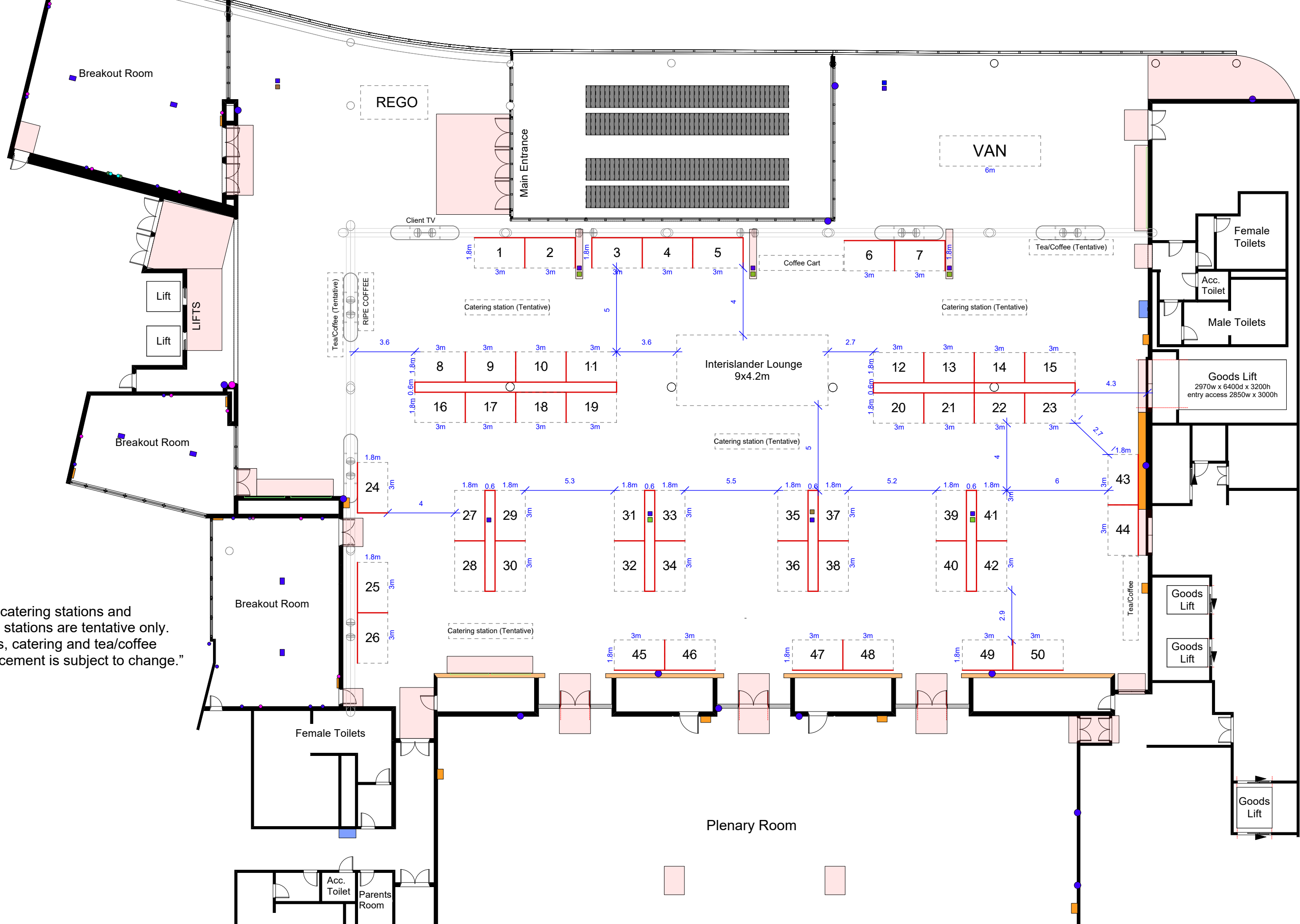
U Suites on Jessie: <https://uhotelgroup.com/u-suites-on-jessie/>

U Suites on Manners: <https://uhotelgroup.com/u-suites-on-manners-2022/>

### **Wellington TOP 10 Holiday Park**

Sites and a range of built accommodation are available.

Contact the park direct [info@wellingtontop10.co.nz](mailto:info@wellingtontop10.co.nz)



“Note, the catering stations and tea/coffee stations are tentative only. Booth sites, catering and tea/coffee station placement is subject to change.”